



12" - 30" Length 6A Grade Ombre Human Hair Extensions Black / Blonde

Our Product Introduction

Basic Information

- Place of Origin: china
- Brand Name: Ellawig
- Certification: CE/BV/SGS
- Model Number: OBVSTW
- Minimum Order Quantity: 100
- Price: Negotiation
- Packaging Details: 付款方式
- Delivery Time: 供 能力
- Payment Terms: 期限
- Supply Ability: 常 包装



Product Specification

- Hair Material: 100% Brazilian Human Hair
- Hair Texture: Body Wave, Straight
- Length: 12"-30"
- Color: 1b# / 613#
- Feature: Can Be Dyed And Ironed
- Highlight: **colorful human hair extensions,**
multi color hair extensions

Product Description

12" - 30" Stock Black / Blonde Ombre Human Hair extension Colored Hair

Specifications:

Material	100% Virgin Human Remy Hair
Hair type	Malaysian hair, indian hair, peruvian hair, brazilian hair, cambodian hair....ect
Color	Main color is Natural color (1b) Ombre hair: 1b/30#, 1b/27#, 1b/613#, 1b/99j, 1b/gray other colors can be customized
Grade	AAAAAAA Virgin Remy Human
Texture Pattern	Tight curl, body wave, Deep wave, big curl, Natural wave, Natural straight, Water Wave or customized
Weight(g)	100g/piece, 10 pieces one killogram
Available length(Inch)	12", 14", 16", 18", 20", 22", 24", 26", 28", 30"
Payment terms	T/T, Western Union, Moneygram, Paypal
Delivery Time	Within 1 days (in Stock) 7-15 days (customized order)

How to care hair?

Wash your hair clean and dry it completely before applying the weave.
 For manage ability, put each worn sparsely.
 When washing, use gently running water, lightly rub hair and scalp.
 To maintain curly hair or wet look, lightly apply gel mouse ,or oil sheen, oil sheen is not recommended for bonded hair, oil may cause weave to ship out.
 When combing, always comb bottom of hair first and work your way up to the root.
 When removing, please always consult your professional beautician.
 For curly hair, do not brush when it is dry.
 Use large toothed comb or your fingers while hair is wet.

FAQ

Q : How much hair is needed for a full head?

A : 10"-18" : two packs are enough.
 18"-22" : two or three packs, depends on your own idea.
 22"-40" : three or more packs are needed.

Q : What is remy cuticle hair?

A : Remy cuticle hair comes from one individual.
 The cuticles are intact, facing the same direction to reduce tangling.
 They also show more shine and smoother texture.

Q : What is single drawn hair?

A : Single drawn hair comes from one single person.
 A person's hair is not the exact same length throughout. The hair that runs down one's back is going to be longer than hair in the front and middle of her hair. So you always get hair that some are longer and some are shorter. Now the most popular hair in the market is single drawn hair.

Q : What is double drawn hair?

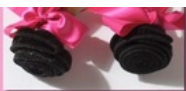
A : Double drawn hair comes from multiple persons.
 The majority of the hair (about 88%-92%) is the same length. This makes this type of hair the most expensive one as it takes much more time to select hair in the same length by hand.

Our Service

Excellent after sale service we will accept refund within 7days before use.
 Please contact me if you are interested.
 I believe you will surely love our hair once you see, touch and test it.

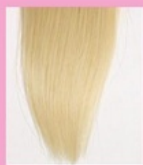


- ☒ TIGHT
- ☒ DOUBLE WEFT
- ☒ TANGLE FREE
- ☒ SHEDDING FREE



- HAIR QUALITY
- ☒ 100% HUMAN HAIR
 - ☒ FULL CUTICLE
 - ☒ SOFT & SILKY
 - ☒ TANGLE FREE
 - ☒ SHEDDING FREE

- HAIR ENDS
- ☒ HEALTHY
 - ☒ FULL ENDS
 - ☒ NO SPLIT
 - ☒ NO LICE



Ellawig companys



+86-15399918960



service@ellawigss.com



ladyshairextensions.com

Room 501, unit 6, building 20, North Lane, east flower market, Beijing