

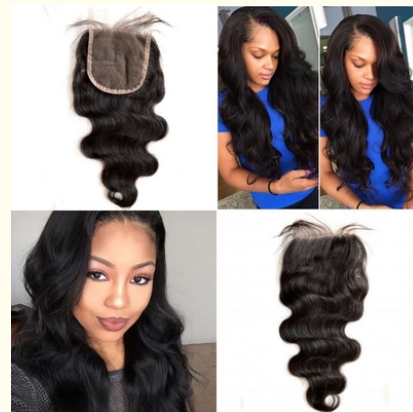
Brazilian Virgin Hair Lace Top Closure Body Wave Free Middle Three Parting

Our Product Introduction

for more products please visit us on ladyshairextensions.com

Basic Information

- Place of Origin: 1
- Brand Name: 2
- Certification: 3
- Model Number: TCLRBW
- Minimum Order Quantity: 100
- Price: Negotiation
- Packaging Details: 付款方式
- Delivery Time: 供 能力
- Payment Terms: 期限
- Supply Ability: 常 包装



Product Specification

- Item Type: Virgin Lace Closure
- Hair Material: 100% Human Hair
- Lace Size: 4"x4"
- Lace Color: Medium Brown
- Hair Color: Natural Black
- Lace Material: Swill Lace
- Human Hair Type: Brazilian Virgin Hair
- Quality: Can Be Dyed And Bleached
- Style: Body Wave
- Highlight: top closure virgin hair , kinky curly hair



More Images



Product Description

Brazilian Virgin Hair Lace Top Closure Body Wave Free Middle Three Parting

Our advantage

1. 100% virgin remy hair extension
2. Natural hairline on the top, it looks more natural.
3. We can produce it according to your detailed requirements.
4. Very soft, good hand feeling. Very clean, no lice or nits.
5. Steady supplying ability, fast delivery
6. Fast shipping with cheap ship cost .2 - 3 days to USA Ca., and 3-4 days to most Euro. at working time
7. Big Discount for large order (100pcs) .
8. Can keep the texture after washing, long time lasting. About 1 years.
9. No mix any synthetic hair, 100% pure natural human hair.
10. We will offer you the Best after-sales service.
Our workers will keep in touch with you anytime.

Product Specification

Hair Material:	100% Virgin Human Hair
Hair Grade:	7A, 6A
Hair Color:	virgin hair natural color, unprocessed hair
Available Texture:	loose wave, body wave, straight, deep wave, kinky curly etc
Available Length:	8"-24" inches
Net Weight:	30g-50g
Double drawn weft:	YES
Virgin Remy Hair:	YES/ Unprocessed
Advantage:	Soft, no tangle and no shedding 100% virgin human hair unprocessed natural color you can dye, bleach and iron it. After wash, it return the same texture.
MOQ	1 pcs
OEM:	1 pcs Per item
Package:	Packed by poly bag, carton.
Shipment:	DHL or UPS, FEDEX
Payment:	Paypal, T/T, Money Gram, Western Union, ESCROW
Delivery Time:	1-2 workdays
Any question, please don't hesitate to contact us.	

How to care hair

Wash your hair clean and dry it completely before applying the weave.

For manage ability, put each worn sparsely.

When washing, use gently running water, lightly rub hair and scalp.

To maintain curly hair or wet look, lightly apply gel mouse ,or oil sheen, oil sheen is not recommended for bonded hair, oil may cause weave to ship out.

When combing, always comb bottom of hair first and work your way up to the root.

When removing, please always consult your professional beautician.

For curly hair, do not brush when it is dry.

Use large toothed comb or your fingers while hair is wet.

How to buy?

Please provide full details about material, size,weight, craft, packing request and the order quantity. Original video chat and pictures will speed up the procedure.

We quote based on what you need & others provided information.

Order confirmation :

All the order and sample must be confirmed by Message or E-mail, then we will go to work.

Sign contract based on approved price, sealed samples, and delivery time and payment terms.





Ellawig companys



+86-15399918960



service@ellawigss.com



ladyshairextensions.com

Room 501, unit 6, building 20, North Lane, east flower market, Beijing