



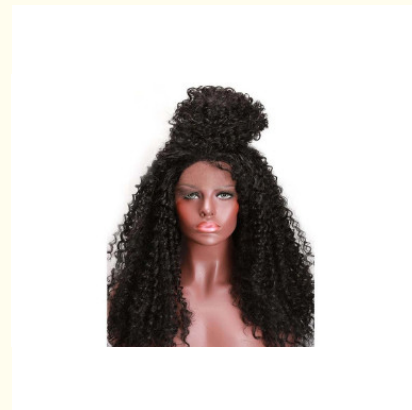
Long Curly Human Hair Extensions

Our Product Introduction

for more products please visit us on ladyshairextensions.com

Basic Information

- Place of Origin: china
- Brand Name: TADE
- Certification: ISO9001 2008
- Model Number: 6303 2RSH
- Minimum Order Quantity: 100
- Price: Negotiable
- Packaging Details: 付款方式
- Delivery Time: 供 能力
- Payment Terms: 期限
- Supply Ability: 常 包装

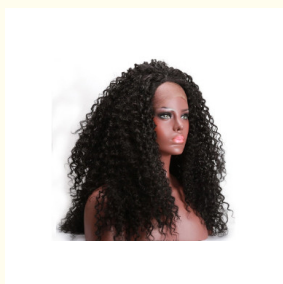


Product Specification

- Hair Color: Black
- Advantage: Mooth
- Color: Black
- Grade: One
- Quality: Ok
- Length: 80



More Images



Product Description

Long Curly Human Hair Extensions

Advantage	Can Be Dyed , Styled , Bleached , Permed , Factory Price ,Thich Ends , Smooth
Express Shipping By Fedex/DHL Within 2-5 Days	Express Shipping By Fedex/DHL Within 2-5 Days
Wig Weight	50g-300g
Delivery Weig	xpress Shipping By Fedex/DHL Within 2-5 Days
Hair Quality	100% Virgin Hair, No Tangle, No Shedding, No Smell, Thick End,Smooth.
Hair Length	8-40 inch
Hair Type	irgin Hair, Cuticle Aligned Hair,Lace Wig, Lace Front Wig ,Full Lace Wig,Brazilian Hair, Hair Bundles,Hair Extension





Ellawig companys



+86-15399918960



service@ellawigss.com



ladyshairextensions.com

Room 501, unit 6, building 20, North Lane, east flower market, Beijing