

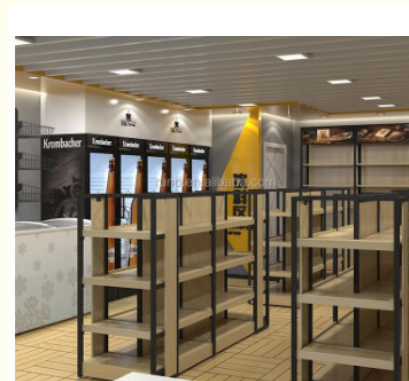
Selling Display Convenience Store Shelves Racks Double Side Container

Our Product Introduction

for more products please visit us on ladyshairextensions.com

Basic Information

- Place of Origin: 00
- Brand Name: 2
- Certification: 3
- Model Number: HY1LS-20
- Minimum Order Quantity: 100
- Price: 3.5-16.9
- Packaging Details: 付款方式
- Delivery Time: 供 能力
- Payment Terms: 期限
- Supply Ability: 常 包装

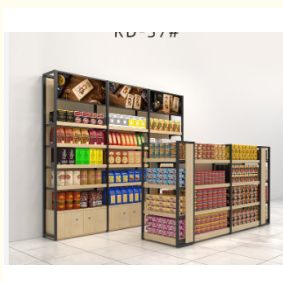


Product Specification

- Fabric: Hebei, China
- Inspection: Breathable
- Size: 200×150×5 Cm
- Brand: Skylee
- Application: Coil Plastic Mattress
- Material: Customized
- Metal: Type Iron
- Thickness: 203*193*15cm
- Box Type: Self Erecting Boxes
- Radiation Power: 840~1300MW
- Metal Type: Iron
- Universal Type: Fit For 80% Model Cars' Injectors
- Indian Hair: Yes
- Size: 390x240x185cm
- Hair Styles: Body Wave, Straight



More Images



Product Description

Selling Display Convenience Store Shelves Racks Double Side Container

Quick Details

Item	Adult Mattress
Feature	For Adult
General Use	Home Furniture
Mail packing	Y
Application	Livingroom, Bedroom, Hotel
Design Style	Classic
Place of Origin	China
	Guangdong
Brand Name	U-micco
Model Number	Adult-T01

Description

Welcome old and new consumers order high polymer healthy household articles! Made up of polymerized three-dimensional elastic structure, the newly researched 3D high polymer pillow core provides a elasticity different from sponge and spring. Our products are tested 250,000 times, no compression and no deformation! People will feel very comfortabler people lie on their side or back, it can fully undertake the body, make people go into deep sleep easily and sleep well all night long. From now on, sleeping is no longer tired!high toughness, it can uniformly disperse pressure and fully support the body. Our products are tested 80,000 times, no compression and no deformation!

ashing the core

Bring you new products with more selling points, expand your product market, increase profits, optimize production technology, and reduce the high cost of traditional complex processing. Our factory covers an area of 40,000 square meters. We have a variety kinds of mattresses, cushions and pillows, and we support customization. Our R & D center has been committed to the polymer elastomer industry for 12 years, and can meet your diversified requirements. You can directly contact the customer service for consultation, call us, or send us an email.replace traditional and harmful foam products. We will continue to complete each customer's entrustment with quality and quantity, saving money and improving quality for customers , Increase efficiency! While creating social and economic value, improve everyone's quality of life. Achieve consensus with customers, reduce pollution, reduce public hazards, and leave a beautiful environment to the next generation.

Washing the Cover:

he polymer pillows, cushions, mattresses, folding chairs , pet pads, pillows are made of POE as raw material. With advanced technology , each filament is made into a hollow three-dimensional structure, and air weaving technology. It is used for molding. The raw material is classified pure imported medical graater permeability: The honeycomb structure has good permeability and the dirt can penetrate without residue. Air permeability: Using Air woven of 3D three-dimensional structure, it is warm in winter and cool in summer, comfortable and natural. Distribute pressure: It is in line with the natural structure of the spine of the human body, protect the spine of the neck and build a good figure. High elasticity: With feature of high toughness, it can uniformly disperse pressure and fully support the body. Our products are tested 80,000 times, no compression and no deformation!



Ellawig companys



+86-15399918960



service@ellawigss.com



ladyshairextensions.com

Room 501, unit 6, building 20, North Lane, east flower market, Beijing