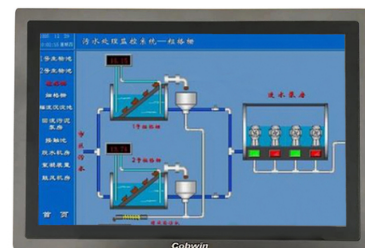


## Unified Comfort Panel Touch Plc Operation 100% Brand New Original Genuine

### Our Product Introduction

#### Basic Information

- Place of Origin: 00
- Brand Name: 2
- Certification: 3
- Minimum Order Quantity: 100
- Packaging Details: 付款方式
- Delivery Time: 供 能力
- Payment Terms: 期限
- Supply Ability: 常 包装



#### Product Specification

- Products Status: New, Stock
- Type: Resistive
- Touch Points: 10 Points
- View Angle: 178 (H) / 178 (V)
- Application: Industrial Application
- Brightness: 250cd-1000cd/m2
- Metal: Type Iron
- Thickness: 203\*193\*15cm
- Box Type: Self Erecting Boxes
- Radiation Power: 840~1300MW
- Metal Type: Iron
- Universal Type: Fit For 80% Model Cars' Injectors
- Indian Hair: Yes
- Size: 390x240x185cm
- Hair Styles: Body Wave, Straight



## Product Description

### Unified Comfort Panel Touch Plc Operation 100% Brand New Original Genuine

#### Product description:

The 4.3 inch LCD Touch Display (Model No. WTY043734A01LMT) is of a color tft lcd display panel with 480x272 resolution and standard 40pin RGB interface, which support sunlight readable, high brightness, tape bonding, wide temperature. The touch panel is of a G+G structure capacitive touch panel, which is composed of a cover glass, sensor glass, driver IC and FPC. It is driven by a N8110 IC Chip, which utilizes an I2C interface and supports 5 points touch.

#### Product details:

Full Metal -20~70 Operating Temperature Resistive hmi touch panel plc					
Model	F4043E		F4070M	F4070E	F4097X
Panel	LED Display	4.3" 16:9	7" 16:9 TFT LCD	9.7" 4:3 TFT LCD	15" 4:3 TFT LCD
	Visual Angel	50°/70°/70°/70°		85°/85°/85°/85°	80°/80°/80°/80°
	Resolution	480x272	800x480	1024x600	
	Color	24 bit (16777216 color)		16 bit (65536 color)	24 bit (16777216 color)
	Brightness	300cd/m <sup>2</sup>	360cd/m <sup>2</sup>	350cd/m <sup>2</sup>	400cd/m <sup>2</sup>
Touch Panel					
4-wire industrial resistive					
Memory	CPU	600MHZ ARM Cortex-A8			
	Storage	128M Flash+128M DDR3			
	RTC	built-in			
Port	Ethernet	10/100M self-adapt	N	10/100M self-adapt	
	SD Card	N	N	support	
	USB Port	1xUSB slave 2.0; 1xUSB Master 2.0			
	Program Download	USB Slave/U disk/Ethernet	USB Slave/U Disk	USB Slave/U Disk/Ethernet	
	Serial Port	COM1: RS232/458/422 COM2: RS232		COM1/COM3: RS232/RS485/RS422 COM2/COM4: RS485	
Power	Rated Power	<5W	<10W	<15W	
	Rated Voltage	DC24V, allowed voltage DC9V~28V		DC24V, allowed voltage DC18V~28V	
	Power Supply protection	lightning and surge protection		isolated power supply, lightning and surge protection	
Environment	Working Temperature	-20~70		-10~60	-20~70
	Storage Temperature	-30~80		-20~70	-30~80
	Ultraviolet-Proof	forbidden to work in strong ultraviolet environment (such as directly sunshine)			
	Protection Level	IP65 front panel; IP 20 back panel			
Size	Material	aluminium alloy+spayed powder galvanized sheet			
	Cutting Out	120x93	192x138	232x182	360x272
	Net Weight	0.65	1.08	1.35	1.58

#### Product features:

Synchronously Monitor: site hmi touch panel plc can be synchronously remotely controlled by mobile and PC that is installed with VNC App.  
600MHz ARM Cortex-A8 CPU: meets general complicated project demand; support various formats graphics and dynamic graphics.  
Compatible PC OS of FStudio Programming Software: Windows 7, Windows 10 and Windows XP three version software for programming so far.  
Seven Optional User Interface Language: Chinese, English, Turkish, Korean, Russian, Persia and Spanish seven UI languages for your choices that makes project programming easy and convinient.

#### FAQ:

Question 1:

Does DWIN product need a MOQ when purchase? I only need some samples in the first.

Answer: No MOQ for standard product, and we have free sample for application, please scan below QR.

Question 2: What kind of Express are supported? Trade terms is ?

Answer: DHL, TNT, UPS, Fedex. Trade terms is EXW.



**Ellawig companys**



+86-15399918960



service@ellawigss.com



ladyshairextensions.com

Room 501, unit 6, building 20, North Lane, east flower market, Beijing

