

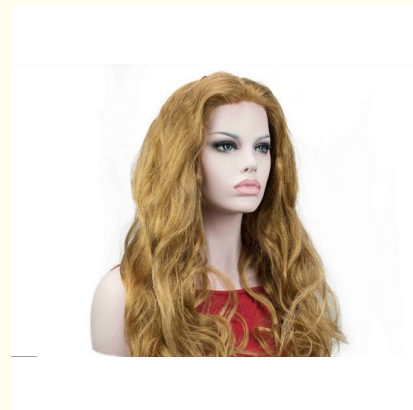


20 Inch Blonde Glueless Human Hair Front Lace Wigs With Body Wave

Our Product Introduction

Basic Information

- Place of Origin: china
- Brand Name: Ellawig
- Certification: SGS,BV
- Model Number: ECX0245
- Minimum Order Quantity: 100
- Price: negotiated
- Packaging Details: 付款方式
- Delivery Time: 供 能力
- Payment Terms: 期限
- Supply Ability: 常 包装



Product Specification

- Hair Type: Lace Front Wigs
- Hair Material: 100% Human Hair
- Hair Color: 613# Blonde Hair
- Hair Density: 130% 150% 180% Can Be Offered
- Length: 12"-30" Available
- Promise: Full Refund If Poor Quality
- Hair Feature: No Tangle, No Shedding, No Lice
- Cap Size: Medium
- Lace Color: Natural Brown
- Highlight: **lace front vrgin hair wigs,
glueless lace front wigs**

for more products please visit us on ladyshairextensions.com

Product Description

Body Wave 613# Blonde Human Hair Lace Front Wigs 20 Inch Hair With Baby Hair

Hair - professional hair manufacturer, deserve your trust.

- ♥ Fast delivery--Packages can be shipped out in 24 hours after getting payment.
- ♥ 5-stars service--Your questions will be answered quickly by online service pls contact us freely.
- ♥ Production--Abundant stock, our factory can produce 1000,000 pcs hair weaving and 1000pcs lace wigs every week.
- ♥ Secure transaction--Buyer's info is protected.

Specifications:

Item	100% virgin human hair
Hair Material	Collected from local young girls
Advantages	1)Machine and hand tied wig, no shedding
	2)Full cuticle in the same direction
	3)Can be ironed and restyled
	4)Full ends, no splits
	5) Very clean, natural ,soft, comb easily.
Hair Length	12",14",16",18",20",22",24",26",28",30"
Hair Style(Texture)	body wave,silky straight, loose wave, deep wave, kinky curly are available Other styles can be customized
Hair Virgin	cuticle aligned correct
Hair Colors	1#,2#,1B#,4#,6#,8#,12#,30#,33#,27#,613#,22#,etc 1b#, 613# areavailable now, others need to be custom made
Hair Weight	150g-250g according to the length
Package	One bundle/PVC Bag,then with Box/Express Bag.
Payment Terms	Western Union,Money Gram,Paypal, T/T
Delivery Time	sample and stock goods within 24hours 7-10days for customized order
Way of Shipping	by air like DHL,UPS,FEDEX,EMS,TNT

Full lace wig and lace front wig:

The full lace wig and lace front wig all has lace is the front (forehead) for baby hairs, it makes the wig look more realistic, and as though it is growing from your head, you will be able to wear a high ponytail with both wigs.

A full lace wig extends the lace around the entire perimeter of the head to give the illusion of hair sprouting the circumference of your head, you can wear the full lace in any style, due to the "freestyle" design which allows for a neutral colored "scalp" and realistic parting.

The lace front wig has lace from ear-to-ear, which will leave you with a natural looking hairline,you also have lace at the nape of the neck, the rest of the cap is usually made of a stretch mesh or other material.

How to place order?

Inquiry detail :

Please provide full details about material, size,weight, craft, packing request and the order quantity. Original video chat and pictures will speed up the procedure.

We quote based on what you need & others provided information.

Order confirmation :

All the order and sample must be confirmed by Message or E-mail, then we will go to work.

Sign contract based on approved price, sealed samples, and delivery time and payment terms.

How to tell human hair with synthetic hair?

Human hair has natural protein .It is easy to tell by burning and smell :

When burning, human hair will show white smoke and be ash ,which will go away after pinching.

By the way, human hair will smell foul.

While synthetic hair will be a sticky ball after burning and will show black smoke.

Human hair may have very few gray hair and split ends. It is normal and not a quality problem

Return policy

Please make the item stay the original state , and it do not fit on you , we only accept not damaged items.

Please contact with us within 7 days if you want to send the products back.

We will refund the payment after received the same items.

Supplier will not refund the shipping fee.



Ellawig companys



+86-15399918960



service@ellawigss.com



ladyshairextensions.com

Room 501, unit 6, building 20, North Lane, east flower market, Beijing