

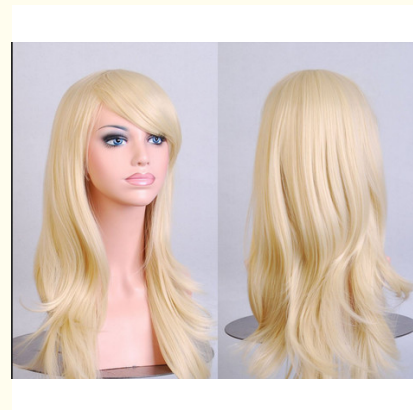


## 32" Humen Synthetic Wigs Normal Lace Single Bleached Knots

Our Product Introduction

### Basic Information

- Place of Origin: china
- Brand Name: Ellawig
- Certification: SGS,BV
- Model Number: ESX0054
- Minimum Order Quantity: 100
- Price: negotiated
- Packaging Details:
- Delivery Time:
- Payment Terms:
- Supply Ability:



### Product Specification

- Product Name: Normal Lace Wigs
- Hair Color: 2#
- Hair Advantage: 100% Kanekalon Fiber Wig(Non-Flammable)
- Hair Feature: Long Straight Hair Wigs
- Length Of Bangs: Without
- Wigs Validity: About 2 Years
- Highlight: **natural looking synthetic wigs,  
synthetic curly wigs**

for more products please visit us on [ladyshairextensions.com](http://ladyshairextensions.com)

## Product Description

### 32" Humen Synthetic Black Wigs Normal Lace Single Bleached Knots

#### Description:

Hair Color:	colorful, any color by your request
Hair Length:	8inch-36inch
Hair Texture:	Wave, curly, yaki, straight as your demands
Hair Density:	60%-180%
Lace Color:	Light brown, medium brown , dark brown. transparent
Lace Type:	normal lace
Baby Hair:	around the perimeter or without
Hair Material:	180 high temperature Kanekalon fiber
Cap Structure:	all machine made wig
Bleached Knots:	single knots , double knots are available
Cap Size:	small (less than 21.75 inch ) , medium (22.25 -22.75 inch ) , lage ( more than22.75 inch )
Availability:	Stock : Usually takes 1 business days to process before shipping. Custom made: 5-15 days

#### Competitive Advantage:

Any color and style for you requested
No tangle and no shedding, when you wash its will not knot
Professional sales team to provide perfect service
Provide high quality products and the favourable price
Factory price with superior workmanship
long-lasting; lustrous; tangle free; no shedding; bleached knots; natural hair line
100% Kanekalon Fiber Wig(Non-Flammable)
Various colors and size are available
Bleached knot is free and make the hairline even more undetectable
Experienced workers with exquisite workmanship
Brush in any direction
High quality auxiliary materials and competitive prices
Different styles can be available and many designs available

#### Wig essential:

Portal: is used to wrap the hair, wearing a wig is a necessity

Steel comb: anti-static steel comb wig special comb

Bracket: when the wigs is not to be use, put on the bracket and prevent the wigs tangle

Care solution: effective protection of the wig was supplle slip, extend the life of the wig

Scissors: scissors flat + teeth cut

#### Applications:

**Q1: What is the difference between Swiss lace and French lace?**

A: Swiss lace is the most undetactable and it is best for experienced weared. French lace is the most durable and it is best for new wearer.

**Q2. What type of hair care products should I use?**

A : Treat this hair just as if it was your own hair.

1, Use good quality shampoo and hair conditioner to care the hair. It's important to keep the hai soft and shiny.

2, You could use gel or spray styling products to keep the hair style.

3, Olive oil will be a good choice to keep the hair healthy.

**Q3: What's bleached knots?**

A: Bleaching knots is just meaning to make the knots more undetectable. The bleached knots can help hidden the knot,it can create the illusion that just like your original hair growing from your own head.

**Q4: Why my hair get tangling?**

A: Tanling is a common problem, after customer wear lace closure for a long time, it will be easy to tangle, and customer just wash it in 2 weeks can solve it.

#### Trading Conditions:

1. Payment term: 30% deposit by T/T or Western union; 70% before delivery.
2. Delivery time: 1-3 days for MOQ ; 15 days for 1000pcs.

3. Samples time: 1 days.
4. Shipping terms: FOB ShenzhenGuangzhouXiamenNingbo.
5. Discounts will be determined by quantity.
6. Welcome distributors to cooperate together.

**Product Image:**

□

**Washing Instructions:**

- 1: Washed every half month to keep it clean.
- 2: Gently with cold or warm water but hot for washing. Avoid direct sun.
- 3: Use large toothed comb (never plastic material) or your fingers taking care of your remy hair.
- 4: It's normal losing little hair when applying remy hair.
- 5: Professional nonoily gel can keep remy hair moist and better looking.
- 6: Perm our remy hair as you wished.
- 7: Hang your hair on jar or dummy head, don't throw it casually taking it off



**Ellawig companys**



+86-15399918960



service@ellawigss.com



ladyshairextensions.com

Room 501, unit 6, building 20, North Lane, east flower market, Beijing