



## Colored 100% Remy Lace Front Wigs Human Hair 12 Inch - 28 Inch Length

Our Product Introduction

### Basic Information

- Place of Origin: china
- Brand Name: Ellawig
- Certification: SGS,BV
- Model Number: ECW0272
- Minimum Order Quantity: 100
- Price: negotiated
- Packaging Details: 付款方式
- Delivery Time: 供 能力
- Payment Terms: 期限
- Supply Ability: 常 包装



### Product Specification

- Technique: Lace Front Wig
- Human Hair Type: Human Hair
- Hair Grade: Remy Human Hair
- Length: 12 Inch - 28 Inch
- Style: Body Wave, Deep Wave,silk Straight
- Hair Color: #1B,#2,#4.
- Highlight: glueless lace front wigs, real human hair wigs

for more products please visit us on [ladyshairextensions.com](http://ladyshairextensions.com)

## Product Description

### Colored 100% Remy Lace Front Wigs Human Hair 12 Inch - 28 Inch Length

#### Product Description:

1.The lace wig is 100% remy hair wig, made by hand( hand tied wig). And usually the lace we used are transparent, so that the wig looks very natural, just as you own hair.

2.Front lace wig is only in the front made by hand, the back half are made by machine, so it is cheaper, but it is much cheaper than full lace wig.

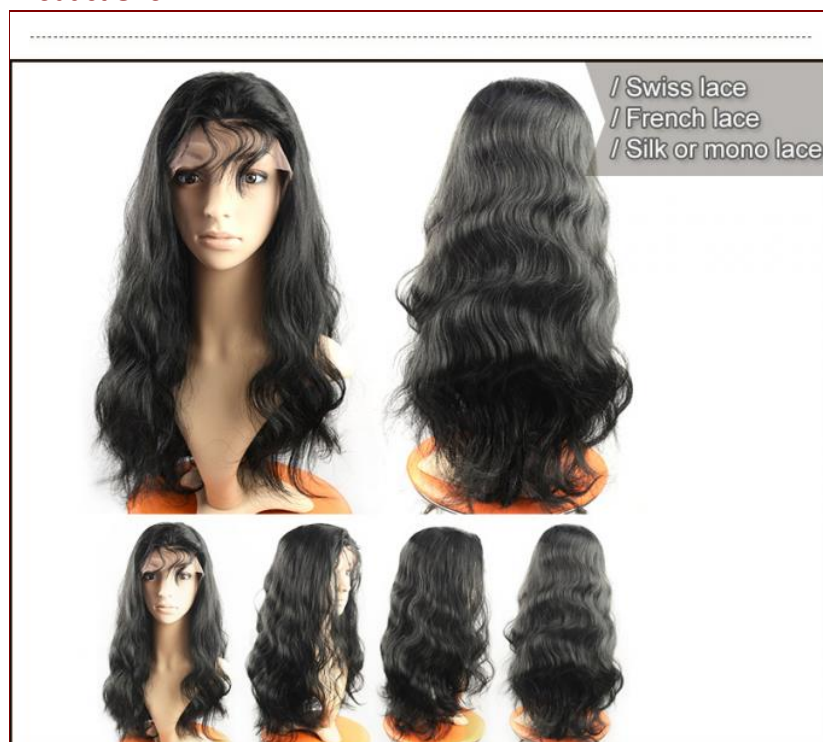
3.The hair density is 130%. The cap size we have in stock are medium size.

#### Front Lace Wig Specifications:

Front Lace Wig Details: Colored 100% Remy Human Hair Front Lace Wigs,Normal Quality Lace Wig.

1.Hair materials	100% human Brazilian hair Indian hair, Malaysian hair and Peruvian hair in stock
2.Weight	120g~200g
3.Hair grade	AAAAA remy hair
4.Hair length	12" 14" 16" 18" 20" 22" 24" 26" 28"
5.Hair color	1# (natural black),#2,#4.
6.Hair style	Straight / body wave / curly
7.Hair density	130%
8.Baby hair	with baby hair all around

#### Product Show:



#### About Hair Length:

10inches = 25cm 12inches = 30cm 14inches = 35cm  
 16inches = 40cm 18inches = 45cm 20inches = 50cm  
 22inches = 55cm 24inches = 60cm 26inches = 65cm  
 28inches = 70cm 30inches = 75cm 32inches = 80cm

#### Shipping&Package:

DHL, FedEx (most by DHL)

#### Transit time:

Normally, you can get the products in 2- 7 working days as soon as you pay!

**To USA:** 2-3 working days.

**To UK,Italy,Spain,European Countries:** 3-4 working days.

**To South Africa or other Africa countries** 3-7 working days.

#### Payment Methods:

- a),PayPal (add 4% poundage)
- b),Western Union

- c), Money gram
- e), T/T (it takes about 4-7 days)
- f), Escrow

### **Our Refund Policy:**

- a), Return/Refund is accepted within 7 days (the date depend on the DHL). Please contact with us if you want to return the goods.
- b), To avoid delivery lost, return should be arranged by register airmail. And the shipping fees of return should be paid by the buyer.
- c). Please leave the goods as they were. We do not accept the damaged.

### **Tips to Care Your Human Hair:**

- 1, Please fix the hair in professional salon which can put the hair more steady and natural!
- 2, When swimming, please wear water proof hat and keep away from the rain for daily using;
- 3, Please use warm water to wash the hair, not cold water; and wash the hair at least 2-3 weeks once;
- 4, Hair shampoo and hair conditioner is necessary when washing; You can brush the hair when it is with hair conditioner;
- 5, Brush the hair softly from bottom up with big tooth comb;
- 6, Do not use too much oil or spray when the hair is in good condition;
- 7, Do not dye the hair colors by yourself, your hairdresser is more professional;
- 8, Since it is hair, the shapes can not last forever, but when hair shapes changed, you can use rollers to curl your hair, and put in boiled hot water for 10 minutes, then air drying for a overnight or 24 hours. Then the hair will get shape again! Special curls should be done by hairdresser!



**Ellawig companys**



+86-15399918960



service@ellawigss.com



ladyshairextensions.com

Room 501, unit 6, building 20, North Lane, east flower market, Beijing